

ST-20
Stirring Tube

Colour paste*



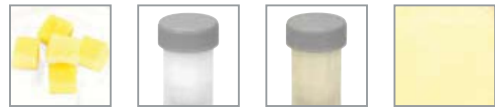
Aroma capsules*



Salt*



www.imlab.com
imlab@wanadoo.fr



DT-20
Dispersing Tube

Cheese*

Heart meat*

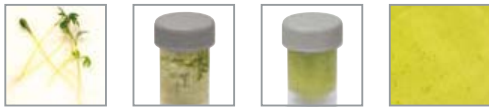
Tobacco*

MAKE IT EASY!
ONE DRIVE MANY APPLICATIONS

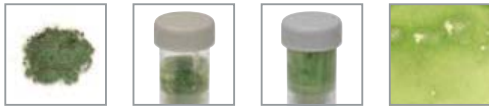


All tubes available in γ -sterilized versions.

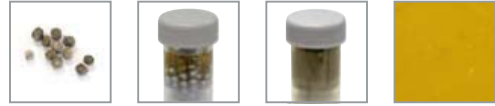
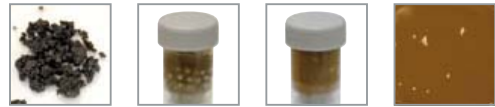
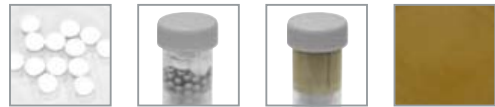
Cress*



Algae*



Earthworm*



Pills*

Ground*

Pepper*

BMT-20 G
Ball-Mill Tube

* Adaptation of the application samples with e.g. 10 ml fluid.

BMT-20 S
Ball-Mill Tube